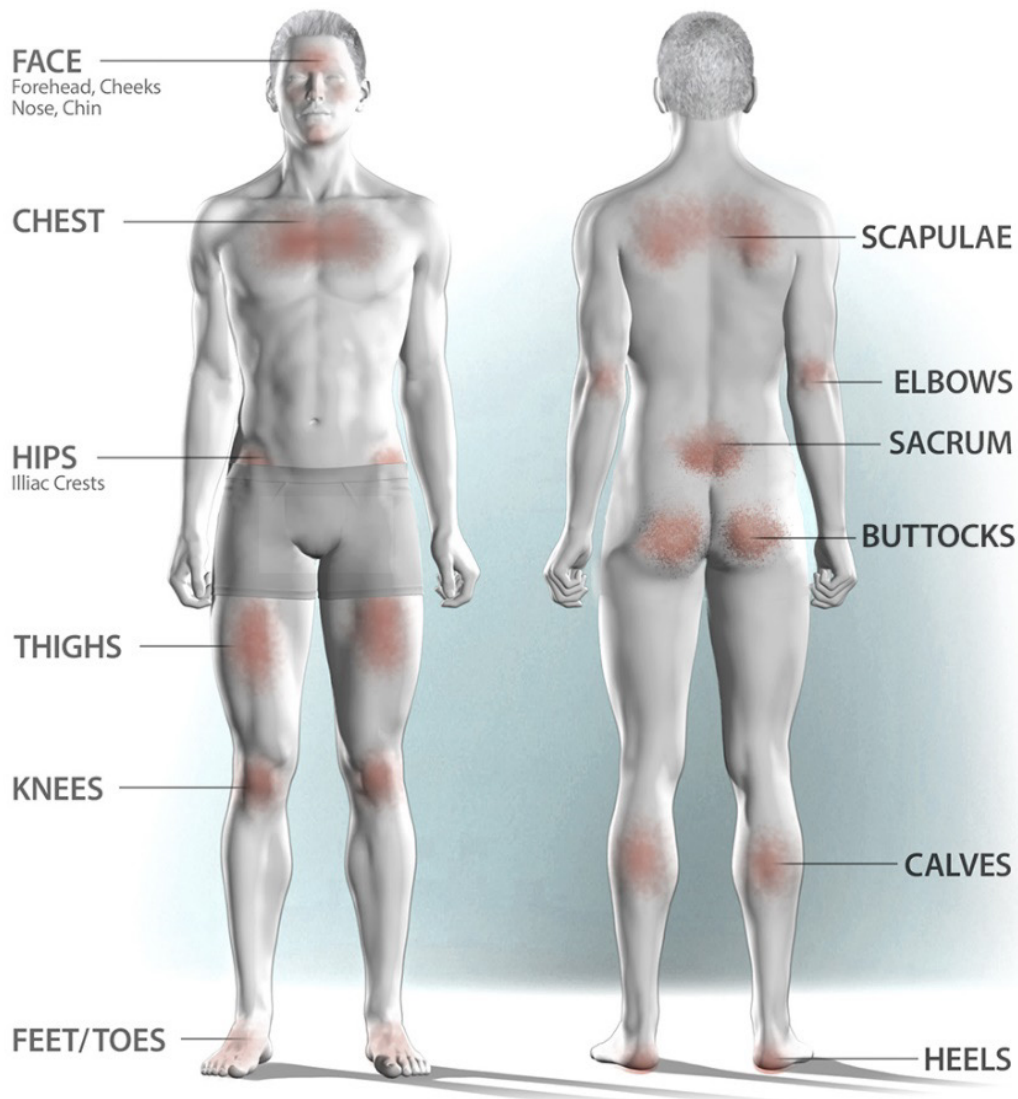


Prevention of Perioperative Pressure Injury



- Perform preoperative and postoperative skin assessments.
- Assess the patient's eyes immediately after surgery and 4 hours after transfer.
- Observe pressure points under medical devices.
- Report both blanchable and non-blanchable erythema.
- Note: Pain may be one of the first indicators of a pressure or nerve injury.

Access the tool kit: www.aorn.org/guidelines/clinical-resources/tool-kits

Funded in part by grants from Xodus Medical through the AORN Foundation